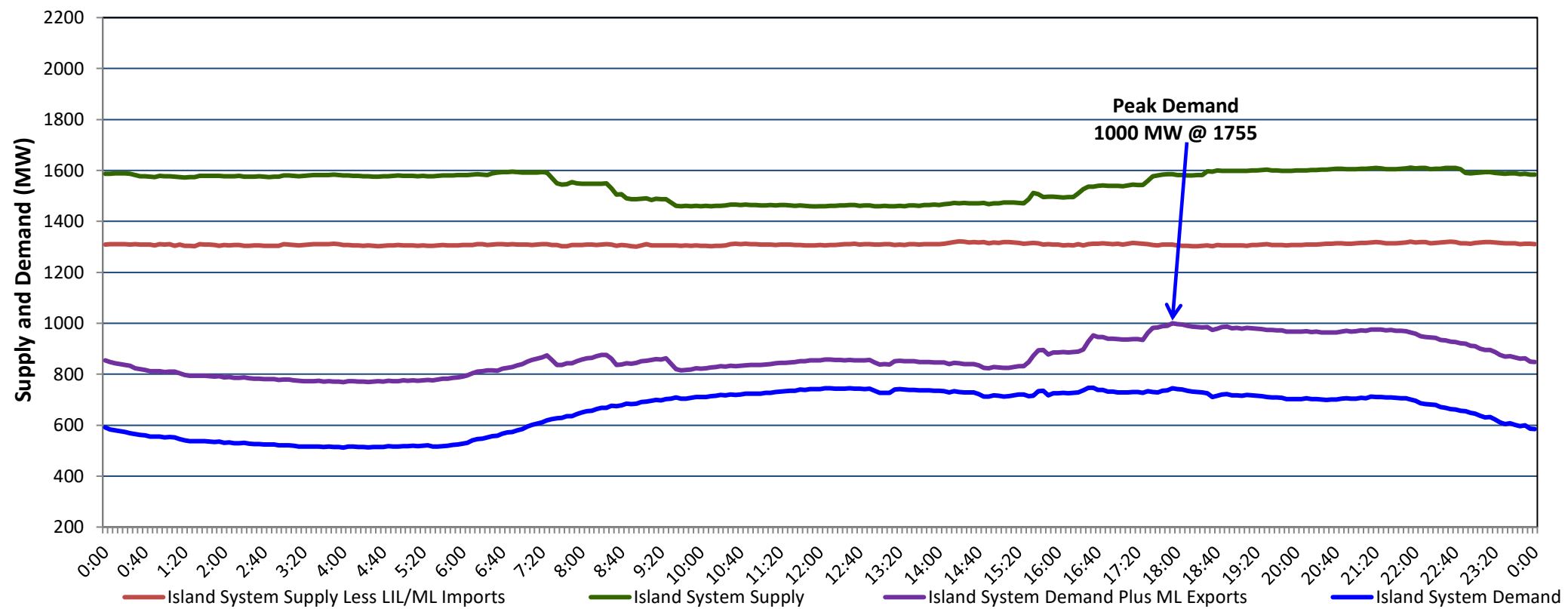


**Newfoundland Labrador Hydro (NLH)
Supply and Demand Status Report Filed Thursday, July 20, 2023**

**Section 1
Island Interconnected System Supply, Demand & Exports
Actual 24 Hour System Performance For Wednesday, July 19, 2023**



Supply Notes For July 19, 2023

1,2

- A As of 0701 hours, March 06, 2023, Upper Salmon Unit unavailable (84 MW).
- B As of 0800 hours, May 21, 2023, Holyrood Unit 2 unavailable due to planned outage (170 MW).
- C As of 0903 hours, June 29, 2023, St. Anthony Diesel Plant available at 8.85 MW (9.7 MW).
- D As of 0856 hours, July 01, 2023, Holyrood Unit 3 available but not operating (150 MW).
- E As of 0800 hours, July 09, 2023, Holyrood Unit 1 unavailable due to planned outage (170 MW).
- F As of 0938 hours, July 09, 2023, Cat Arm Unit 1 unavailable due to planned outage (67 MW).
- G As of 2059 hours, July 13, 2023, Stephenville Gas Turbine unavailable (50 MW).

**Section 2
Island Interconnected Supply and Demand**

Thu, Jul 20, 2023	Island System Outlook ³	Seven-Day Forecast	Temperature (°C)		Island System Daily Peak Demand (MW)	
			Morning	Evening	Forecast	Adjusted ⁷
Available Island System Supply: ⁵	1,616 MW	Thursday, July 20, 2023	23	21	1,060	1,060
NLH Island Generation: ^{4,8}	1,000 MW	Friday, July 21, 2023	19	20	735	735
NLH Island Power Purchases: ⁶	115 MW	Saturday, July 22, 2023	20	18	730	730
Other Island Generation:	210 MW	Sunday, July 23, 2023	18	21	745	745
ML/LIL Imports:	291 MW	Monday, July 24, 2023	18	21	795	795
Current St. John's Temperature & Windchill:	23 °C	Tuesday, July 25, 2023	17	20	780	780
7-Day Island Peak Demand Forecast:	1,060 MW	Wednesday, July 26, 2023	18	20	785	785

Supply Notes For July 20, 2023

3

- Notes:
1. Generation outages for running and corrective maintenance are included. These are not unusual for power system operations. They generally do not impact customer supply. The power system operators schedule outages to system equipment whenever possible to coincide with periods when customer demands are low and sufficient supply reserves are available. However, from time to time equipment outages are necessary and reserves may be impacted.
 2. Due to the Island system having no synchronous connections to the larger North American grid, when there is a sudden loss of large generating units there may be a requirement for some customer's load to be interrupted for short periods to bring generation output equal to customer demand. This automatic action of power system protection, referred to as under frequency load shedding (UFLS), is necessary to ensure the integrity and reliability of system equipment. Under frequency events have typically occurred 5 to 8 times per year on the Island Interconnected System and the resultant customer load interruptions are generally less than 30 minutes. With the activation of the Maritime Link frequency controller during the winter of 2018, UFLS events have occurred less frequently.
 3. As of 0800 Hours.
 4. Gross output including station service at Holyrood (24.5 MW) and improved NLH hydraulic output due to water levels (35 MW).
 5. Gross output from all Island sources (including Note 4).
 6. NLH Island Power Purchases include: CBPP Co-Gen, Nalcor Exploits, Rattle Brook, Star Lake, Wind Generation and capacity assistance (when applicable).
 7. Adjusted for curtailable load, market activities and the impact of voltage reduction when applicable.
 8. Due to limitations inherent in the design of combustion turbines, the output of combustion turbines may be reduced in the event that ambient temperatures exceed the threshold

**Section 3
Island Peak Demand Information
Previous Day Actual Peak and Current Day Forecast Peak**

Wed, Jul 19, 2023	Actual Island Peak Demand ⁹	17:55	1,000 MW
Thu, Jul 20, 2023	Forecast Island Peak Demand		1,060 MW

Notes: 9. Island Demand / LIL / ML Exports (where applicable) is supplied by NLH generation and purchases, plus generation owned and operated by Newfoundland Power and Corner Brook Pulp & Paper (Deer Lake Power, DLP).